

# H<sub>2</sub>-Ohhh!™

## FOUR Quality Watercolor Papers!

Four GREAT WATERCOLOR Papers!  
There are lightweight versions for STArter, and  
serious heavyweight sheets that handle  
advanced challenges.



# WAT120™

Natural  
Color,  
Felt-Like  
Finish

**WAT120...STArter™** is tough for his size!  
He's a lot like 200... just a little thinner.  
His hat (with WC pans) and pre-wetted brush  
indicate how eager he is to perform under the  
pressures of watercolor work.  
His heavy texture is visible from afar.

10.3 pt

### Great Paper & Price For Beginners!

ACID FREE WITH ARCHIVAL QUALITY

## Molly's Magnificent **SCHOOL™** **120™lb™ STArter™ Watercolor Paper™**

60%  
OFF

| Size   | Item #          | Lbs | Shts | List   | NET    |
|--------|-----------------|-----|------|--------|--------|
| 18X24" | WAT120-500      | 58  | 500  | 489.35 | 213.16 |
| 18x24" | WAT120-250      | 33  | 250  | 261.07 | 113.71 |
| 18X24" | WAT120-100      | 12  | 100  | 117.47 | 51.17  |
| Size   | Item #          | Lbs | Shts | List   | NET    |
| 12x18" | WAT120-1218-500 | 30  | 500  | 257.82 | 112.30 |
| 12x18" | WAT120-1218-250 | 16  | 250  | 143.57 | 62.53  |
| 12x18" | WAT120-1218-100 | 7   | 100  | 70.48  | 30.70  |
| Size   | Item #          | Lbs | Shts | List   | NET    |
| 9x12"  | WAT120-912-500  | 16  | 500  | 141.96 | 61.83  |
| 9x12"  | WAT120-912-250  | 9   | 250  | 84.01  | 36.58  |

# WAT200™

## ADVANCED™ WATERCOLOR PAPER™



WAT200...Advanced...the biggest, boldest toughest superhero around... wet on wet...salt on wet... rubbing alcohol on wet... he can take anything... even Oil Pastel Resist! This professional won't let you down.



Mmmm-Mmm!™

H2-Ohhh!™

17.7 pt *Molly's Magnificent* **SCHOOL™**  
**200™lb™** Advanced™ Watercolor Paper™

| Size   | Item #         | lbs | Shts          | List   | NET           |
|--------|----------------|-----|---------------|--------|---------------|
| 9x12"  | 200WAT-912-500 | 25  | 500           | 239.85 | <b>104.47</b> |
| 9x12"  | 200WAT-912-250 | 13  | 250           | 131.79 | <b>57.41</b>  |
| 9x12"  | 200WAT-912-100 | 6   | 100           | 65.10  | <b>28.36</b>  |
| 4.5x6" | 200WAT-P       | 2   | 100 POSTCARDS |        | <b>6.72</b>   |

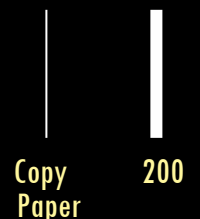
Tested and Proven For:

- Wet on Wet
- Salt on Wet
- Rubbing Alcohol on Wet
- Oil Pastel Resist
- Masking with Printers Tape



Natural Color,  
Felt-Like Finish

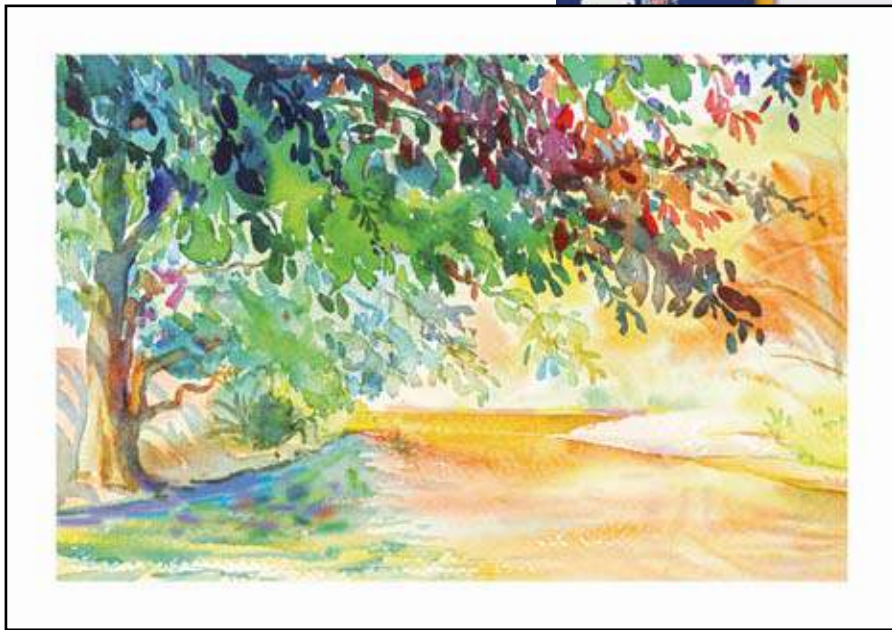
Compare Thickness



(3 pt copy paper is represented by a .75 pt line.)

ACID FREE WITH ARCHIVAL QUALITY

# PACON UCREATE 140-LB WATERCOLOR PAPER



This 140 lb. Watercolor Paper comes in economical packages of 50 sheets, and is perfect for groups or classrooms. No stretching required. Acid-free and recyclable.

- |               |        |               |               |
|---------------|--------|---------------|---------------|
| <b>P4943</b>  | 9X12"  | 50 Sheet Pack | <b>11.48</b>  |
| <b>CS4943</b> | 9x12"  | 600 Sheets    | <b>137.80</b> |
| <b>P4944</b>  | 12x18" | 50 Sheet Pack | <b>22.15</b>  |
| <b>CS4944</b> | 12x18" | 300 Sheets    | <b>132.90</b> |

**Both Are  
WHITE**

# PACON UCREATE 90-LB WATERCOLOR PAPER

This 90 lb. watercolor paper in economical packages is perfect for Pre-K and student grade artwork. These sturdy sheets are perfect for wet and mixed media. UCreate® Watercolor Paper is used in Fresh Artists® programs which benefit children in under resourced schools. Acid free. Recyclable.

- |               |        |               |               |
|---------------|--------|---------------|---------------|
| <b>P4925</b>  | 9X12"  | 50 Sheet Pack | <b>8.56</b>   |
| <b>CS4925</b> | 9x12"  | 600 Sheets    | <b>102.80</b> |
| <b>P4927</b>  | 12x18" | 50 Sheet Pack | <b>17.15</b>  |
| <b>CS4927</b> | 12x18" | 600 Sheets    | <b>205.80</b> |
| <b>P4933</b>  | 18x24" | 50 Sheet Pack | <b>36.28</b>  |
| <b>CS4933</b> | 18x24" | 300 Sheets    | <b>217.70</b> |

